

PROJECT TITLE: RICHER ELEMENTARY SCHOOL

Meeting Date:	March 27, 2017	SBC Project Meeting # 01
Prepared by:	Tieshia Walton – Daedalus Projects Inc	

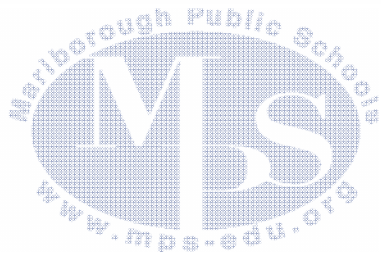
<u>Attendees:</u>	<u>Affiliation</u>
Arthur Vigeant	Mayor, City of Marlborough/SBC Chair
Nicholas Milano	City of Marlborough
John J. Ghiloni	School Building Committee Member/ Commissioner of Public Works
Katie Robey	School Building Committee Member/ City Councilor
Douglas Scott	School Building Committee Member/ Building Commissioner, City of Marlborough
Jim Fortin	School Building Committee Member
Denise Ryan	School Committee Member
Joseph Trolla	School Building Committee Member
Patrick Mauro	School Building Committee Member
Maureen Greulich	Superintendent, Marlborough Public Schools
R.J. Skaza	Principal, Richer Elementary
Michael Bergeron	Marlborough Public Schools
Thomas Gatzunis	Daedalus Projects, Inc. (DPI)
Tieshia Walton	Daedalus Projects, Inc. (DPI)
Michael Pagano	Lamoureux Pagano & Associates (LPA)
Peter Caruso	Lamoureux Pagano & Associates (LPA)
William Senecal	Lamoureux Pagano & Associates (LPA)
Katie Crockett	Lamoureux Pagano & Associates (LPA)
Paul Cacciola	Lamoureux Pagano & Associates (LPA)

Item	Description: New Business	RESP/STATUS
1.01	INTRODUCTIONS	ALL OPEN
1.02	<p>SBC MEETING:</p> <ul style="list-style-type: none"> • Tom Gatzunis described the MSBA process to the SBC Meeting members and attendees. • We are currently in the Feasibility Study Phase of the project. • The MSBA will only reimburse 8% of site cost. • The attached presentation list three different enrollment options. The first option is K-4, 675 students, 3 schools. The 2nd option is K-5, 1060 students, 3 schools. The third option is K-5, 610 students, 4 schools. The middle and third options have the 5th graders spread amongst all schools. • The space summary that is included as part of the Preliminary Design Program (PDP) submission details the existing space conditions at the Richer Elementary School, see below; <p>Existing Conditions of the Richer:</p> <ol style="list-style-type: none"> 1. Two story wing Classrooms are somewhat undersized but within the realm of possibility for an addition renovation project 2. The kindergarten classrooms are in the wood framed part of the school. Modular Classrooms 3. Core facility spaces are undersized. 4. Richer site development constricted by wetlands. 5. Access is through a residential area. <ul style="list-style-type: none"> • 8-10 buildable acres are needed. There are no easy solutions as of yet. Alternative sites are being looked at, but there are many factors that play into choosing a site. If another site is chosen, we must have ownership 	DISTRICT/CITY /DAEDALUS/LPA

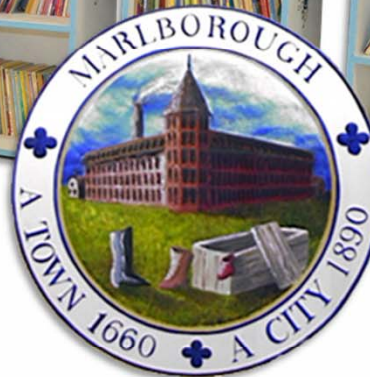
	<p>prior to Schematic Design Geotechnical test, etc. will need to be done on any alternate sites.</p> <ul style="list-style-type: none"> • Funding is not determined by new construction vs. renovation, but by square footage. • 54.16 % of MSBA eligible costs is the City reimbursement rate. MSBA has multiple factors to determine eligible costs including a cap on cost per square footage, site costs, and an allotment for Furniture Furnishings and Equipment (FF&E). • The SBC will need to take a vote approving the Preliminary Design Program (PDP) prior to submitting to the MSBA. • There are currently 526 students at the Richer. There is no space to transfer these students during construction. Jaworek and Kane cannot accommodate Richer students. • If the 5th graders are taken from the middle schools, the MSBA will want to know how the empty spaces will be utilized. The idea is to use the space to accommodate art, music and other classroom space needed. No space will be underutilized. 	
1.03	<p>FOCUS GROUPS/PROGRAMMING MEETINGS:</p> <ul style="list-style-type: none"> • We will need to complete all focus groups/programming meetings by April. • The first focus group will be with just the district. 	ALL OPEN
1.04	<p>SCHEDULE:</p> <ul style="list-style-type: none"> • 6/14/2017-The Preliminary Design Program (PDP) will be submitted to the MSBA. LPA will need to complete their work by Mid-May to meet this submission date. • September 2017- The Preferred Schematic Report (PSR) is required to be submitted to the MSBA during this phase. • September 2017- Schematic Design phase will begin • February 2018-March 2018-City will need to secure funding • April 2018-Design Development • May 2019-Construction begins, 18-30 month duration depending on which option is chosen. 	DISTRICT/CITY /DAEDALUS/LPA
1.05	<p>SITE VISITS:</p> <ul style="list-style-type: none"> • The idea is to visit the schools listed below that were designed by LPA to get an idea of their design concepts; <ol style="list-style-type: none"> 1. Lincoln Street School, Northborough, MA 2. Sherwood Middle School, Shrewsbury, MA 3. John R. Briggs, Ashburnham, MA • The first site visit is scheduled for April 4th. 	ALL OPEN
1.06	<p>ADJOURNMENT:</p> <p>Motion made by Chairman Vigeant to end the meeting seconded by Michael Bergeron at 5:10 p.m. Motion passed unanimously,</p>	RECORD
1.07	<p>ATTACHMENTS:</p> <ul style="list-style-type: none"> • SBC Presentation attached for reference. 	RECORD

Respectfully submitted
May 16, 2017

Mayor Arthur G. Vigeant
Chair



**RICHIE
WELCOMES
YOU...**



RICHIER SCHOOL



Marlborough School Building Committee

Owner's Project
Manager:



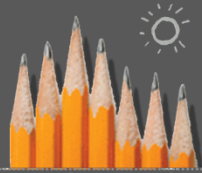
Architect:




Lamoureux Pagano Associates




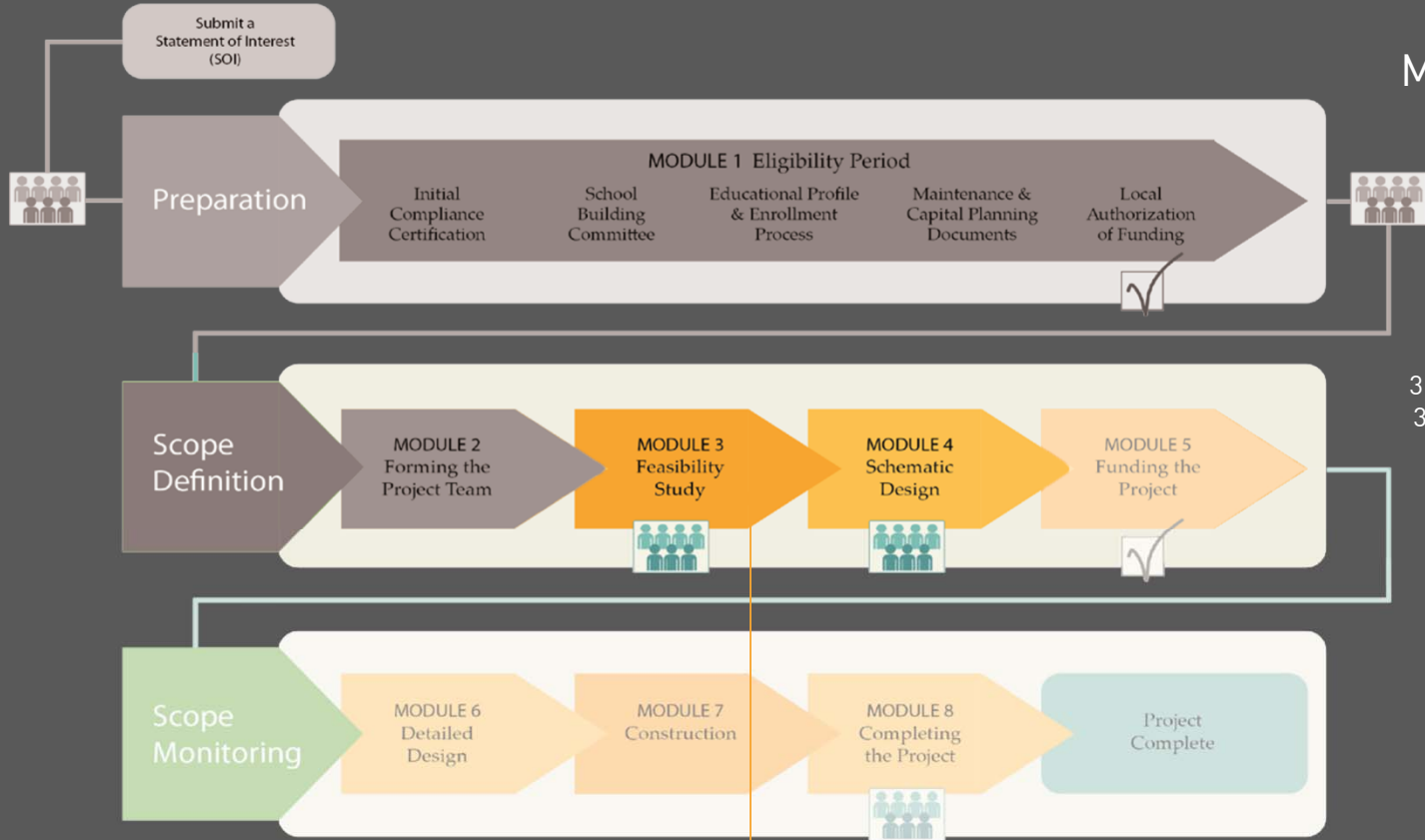
Massachusetts School Building Authority



MSBA Core Program Process Overview

 MSBA Board Approval

 District Vote



MSBA CORE PROGRAM PROCESS

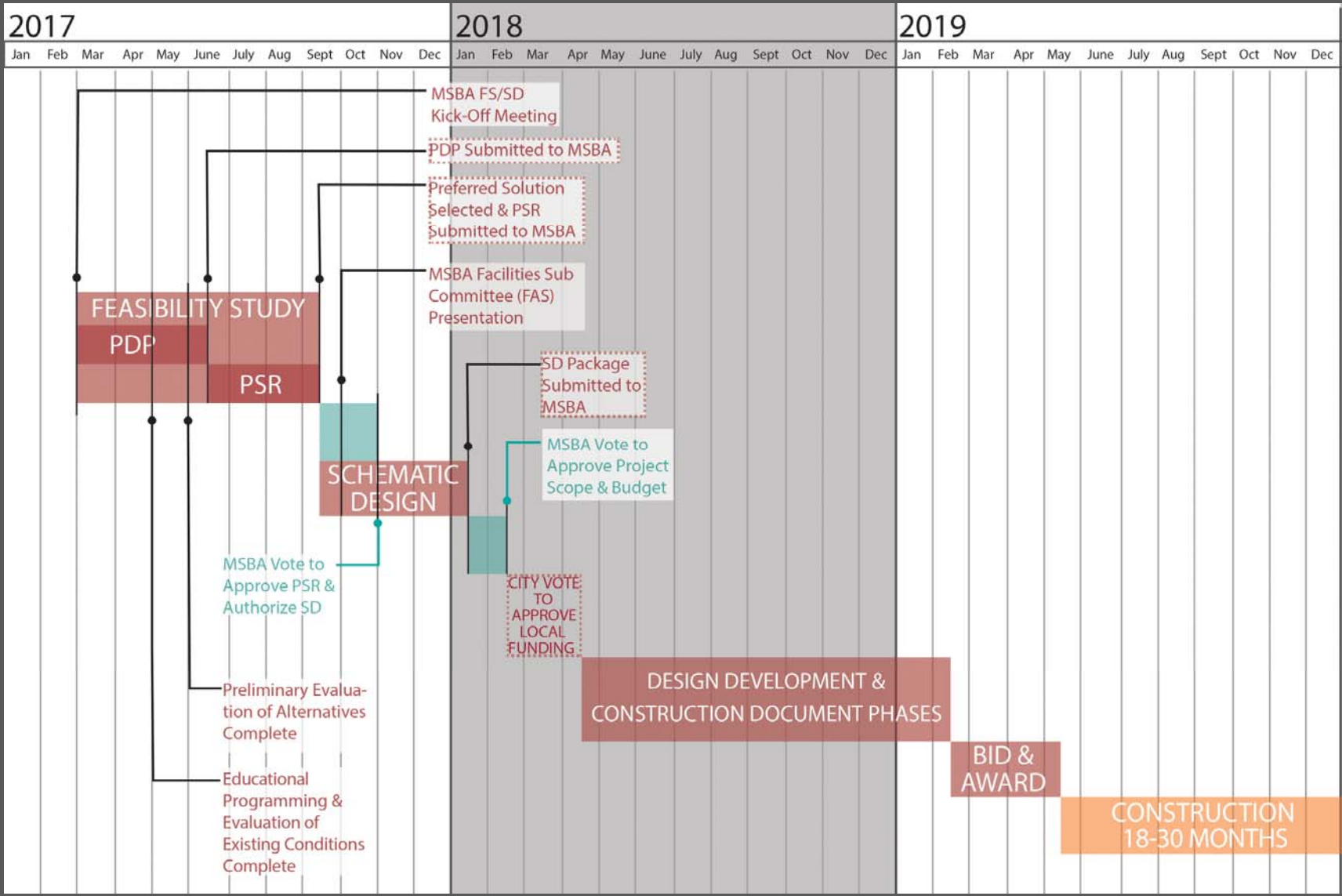
MODULE 3: FEASIBILITY STUDY

- 3.1 PDP: Preliminary Design Program
- 3.2 PSR: Preferred Schematic Report

MODULE 4: SCHEMATIC DESIGN

- 3.1 PDP: Preliminary Design Program
- 3.2 PSR: Preferred Schematic Report

PRELIMINARY PROJECT SCHEDULE





GRADE CONFIGURATIONS:

**PK
K-4
5-8
9-12**



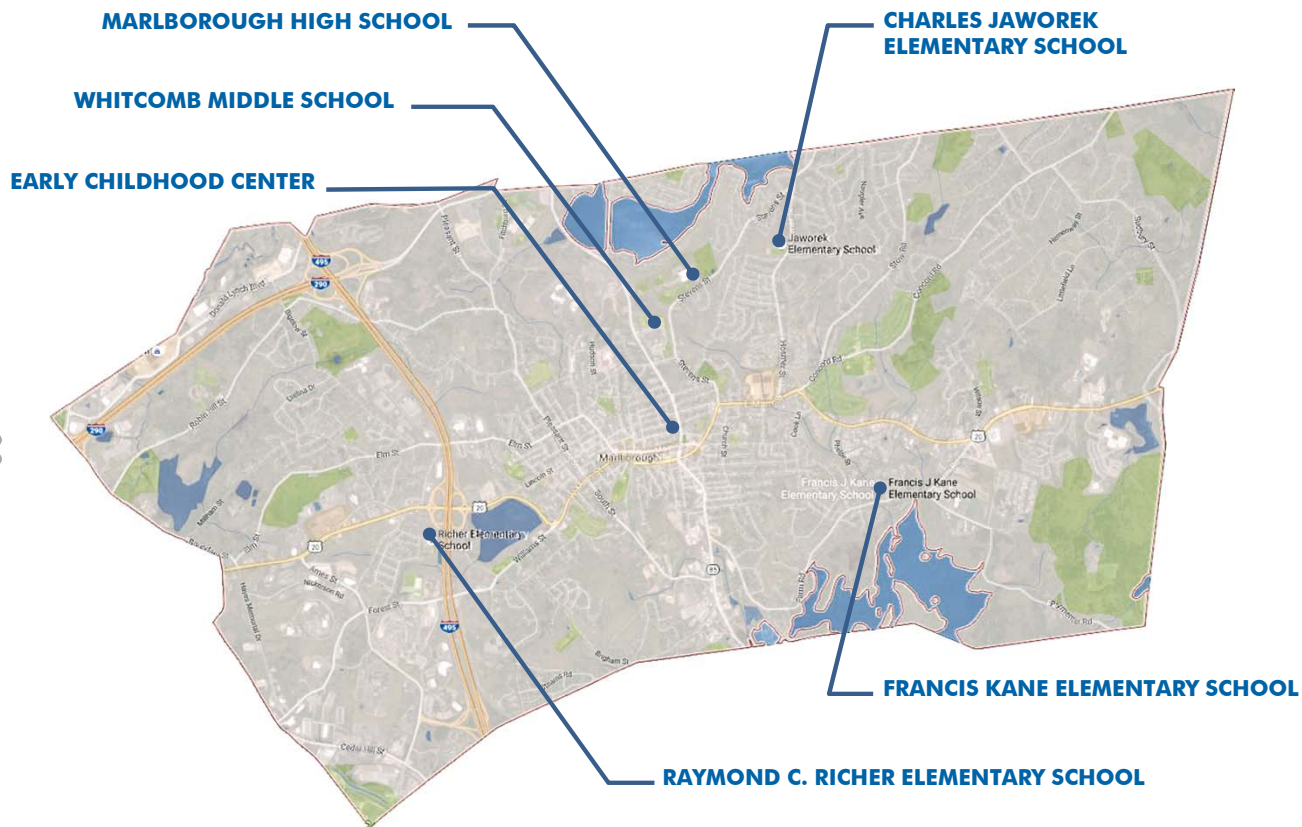
**PK
K-5
6-8
9-12**

STUDY OPTIONS:

**675 STUDENT
ENROLLMENT [K-4]**

**1,060 STUDENT
ENROLLMENT [K-5]**

**610 STUDENT
ENROLLMENT [K-5]**



ENROLLMENT OPTIONS

**K-4 675 STUDENTS
3 SCHOOLS**



**RICHER
448 + 227**

- Existing Richer Site

**K-5 1060 STUDENTS
3 SCHOOLS**



**RICHE
R 448 + 612**



**JAWOREK
701**



**KANE
594**

- Existing Richer Site

**- Repurpose Whitcomb
5th Grade Space**

**K-5 610 STUDENTS
4 SCHOOLS**



610



**RICHER
448**



**JAWOREK
701**



**KANE
594**

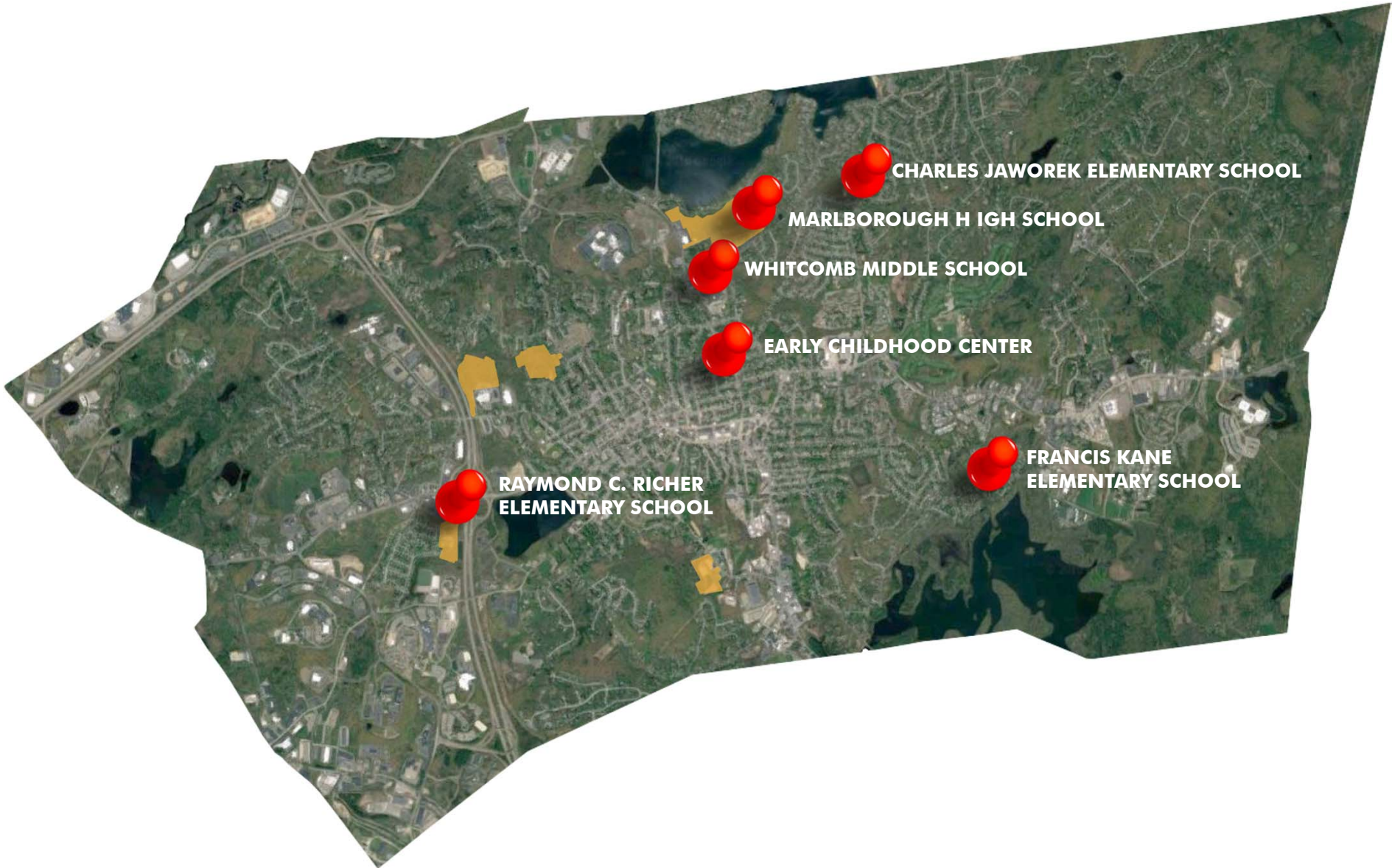
- New Site

**- Repurpose Whitcomb
5th Grade Space**

RICHER ELEM. -- EXISTING COND.



ALTERNATIVE SITES



**RAYMOND C. RICHER
ELEMENTARY SCHOOL**

EARLY CHILDHOOD CENTER

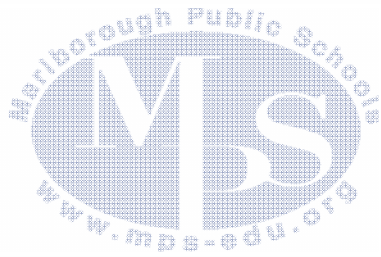
WHITCOMB MIDDLE SCHOOL

MARLBOROUGH HIGH SCHOOL

CHARLES JAWOREK ELEMENTARY SCHOOL

**FRANCIS KANE
ELEMENTARY SCHOOL**

RICHER SCHOOL



**RICHEE
WELCOMES
YOU...**

